

Prison Pharmacy – A GPhC Inspector Calls

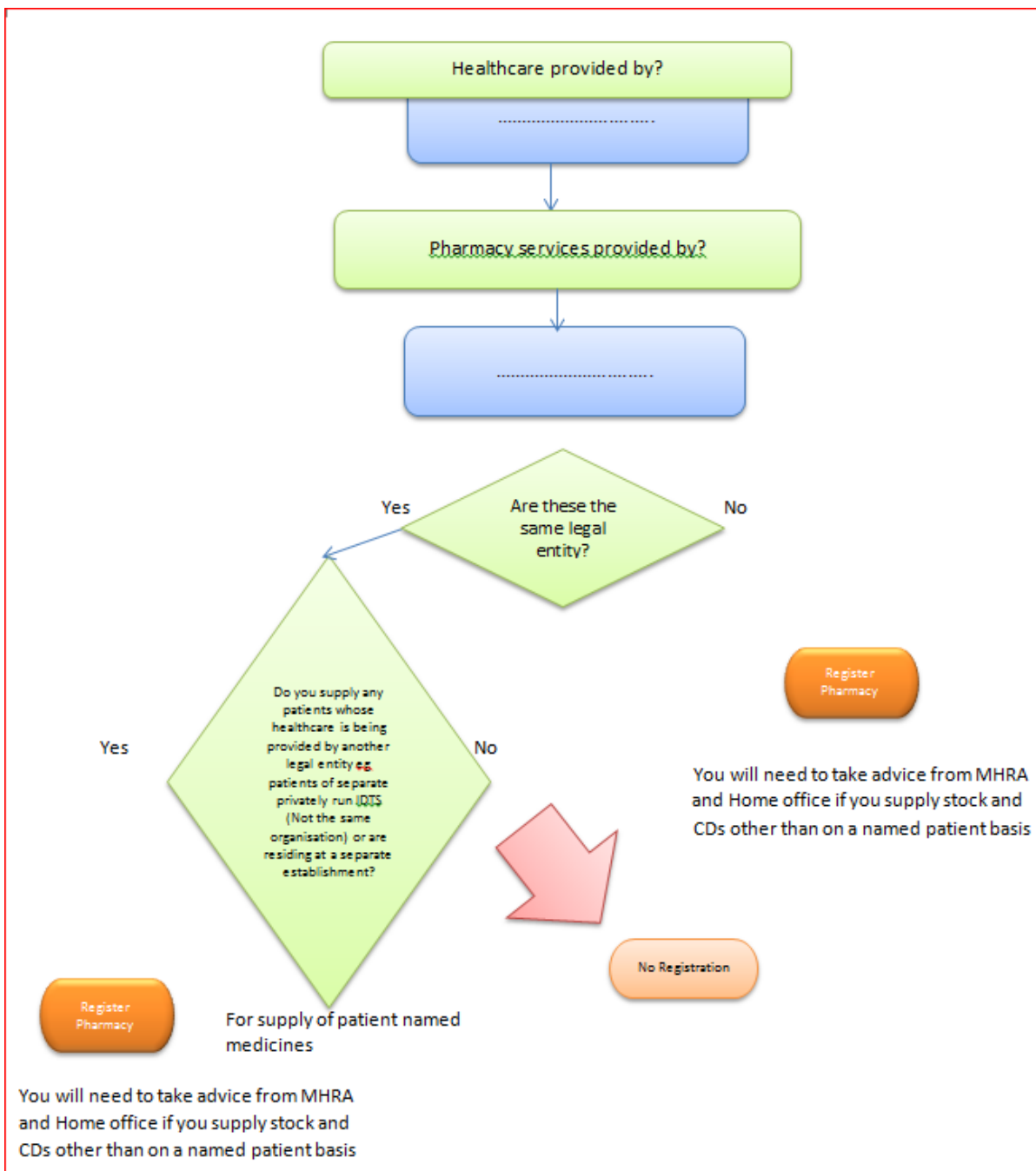
Presented by Susan J Melvin

Purpose of this session

- Registering your pharmacy? – or not!
- A few common issues I see
- Focus mainly on GPhC registered pharmacies

Should I Register with the GPhC/Home Office/CQC?

- Depends on who provides Healthcare and Pharmacy services.
- Are you supplying another legal entity?
- Are you supplying stock to anyone?
- Do you have CDs? – Who has them and why?



CD Registers/Records

- Every legal entity who keeps CDs must have a legally compliant CD REGISTER, and only one.
- Can have “ward books” as CD records which don’t need to be legally compliant.

IP Risk Assessments

- Robust assessments essential for the protection of patients and staff.
- Seen by the prescriber, but assessed by the person who knows the patient best – a nurse, pharmacy technician, etc.
- Suitable for the patient and the medicine.

Administration Times

Often 8am, 11.30am, 4pm
 10pm unlock

- Is naproxen 250mg tds NIP acceptable?
- Is zopiclone daily IP acceptable?
- Mirtazipine?

NIM inspections

- 1 Governance
- 2 Staff
- 3 Premises
- 4 Medicines management
- 5 Equipment

Principle 1 Governance

- Near Misses/SOPs/IP risk assessments
- RP notice etc
- Patient feedback...?
- Insurance
- Records
- Confidential information
- Safeguarding

Principle 2 Staff

- Number
- Training
- Competence
- Feedback
- Targets

Principle 3 Premises

- Suitable
- Confidential
- Secure

Principle 4 Medicines Management

- How the service is run
 - IP, NIP, Risk assessments, MDS
- Medicines storage – CDs, Fridges, general
- High risk medicines
- Alerts

Principle 5 Equipment

- Are there any issues?

Questions?

